



BeeBusinessBee

Stocks and Shocks

Activity

Write down in this box what you know about the stock market **before** taking part in this activity.

Write down in this box what you know about the stock market **after** taking part in this activity.





Original Share Prices

Company	Market	Share Price
BeePee	Oil	200
BeezeeJet	Transport	120
BeeMart	Retail	100
BeeBank	Banking	110
BeePhone	Telecommunications	50
BeeGem	Energy	250
BeeTV	Media	20
BeeTree	Forestry	10
BeeMobile	Telecommunications	100
BeeSolar	Energy	150

Remember that all share prices are in pence. So 100p would be £1.00.





Student Investment Sheet

Trading
Period:

Start

Purchase of Shares

Company	Share Price	Number of Shares	Total Amount Invested

Total Invested :

Cash Remaining :

Overall Value :

(This figure should equal £20)





Student Investment Sheet 1

Trading
Period:

Period 1

Value of Share Portfolio

Company	Share Price	Number of Shares	Total Amount Invested

Total Invested :

Cash Remaining :

Overall Value :





Purchase of Shares

Company	Share Price	Number of Shares	Total Amount Invested

Total Invested :

Cash in Bank :

(Enter the amount of money you had in the bank, not spent.)

Total Cash :

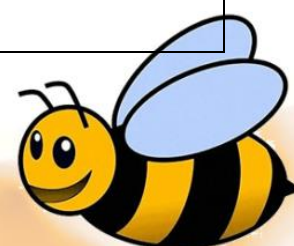
Sale of Shares

Company	Share Price	Number of Shares	Total Amount Returned

Total Returned :

Remaining Cash :

(Total Cash - Total Invested)





Student Investment Sheet 2

Trading
Period:

Period 2

Value of Share Portfolio

Company	Share Price	Number of Shares	Total Amount Invested

Total Invested :

Cash Remaining :

Overall Value :





Purchase of Shares

Company	Share Price	Number of Shares	Total Amount Returned

Total Returned :

Cash in Bank :

(Enter the amount of money you had in the bank, not spent.)

Total Cash :

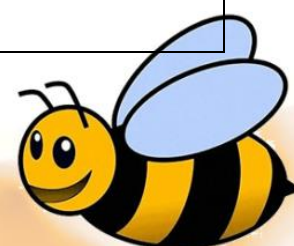
Sale of Shares

Company	Share Price	Number of Shares	Total Amount Invested

Total Invested :

Remaining Cash :

(Total Cash - Total Invested)





Student Investment Sheet 3

Trading
Period:

Period 3

Value of Share Portfolio

Company	Share Price	Number of Shares	Total Amount Invested

Total Portfolio Value :

Cash in Bank :

Overall Profit :

Overall Profit is calculated by taking 2000 from (Total Portfolio Value + Cash In Bank)

